

EU Pro - Special Color



| Model | Wattage | Voltage | Color | Color Temp | CRI | Lumen | Angle | Length | Type | Power factor |
|-------------------------|---------|----------|-------------------------|---------------|-----|--------|-------|--------|--------|--------------|
| LED F10T8/827/G/600/YE | 10W | 220-240V | Yellow Enhancement | 2700K | ≥80 | 900lm | 280° | 600mm | Type A | 0.9 |
| LED F10T8/836/G/600/RE | 10W | 220-240V | Red Enhancement | 3600K | ≥80 | 1000lm | 280° | 600mm | Type A | 0.9 |
| LED F10T8/880/G/600/WE | 10W | 220-240V | White Enhancement | 8000K | ≥80 | 1100lm | 280° | 600mm | Type A | 0.9 |
| LED F10T8/627/G/600/YL | 10W | 220-240V | Yellow | 2740K | ≥60 | 1200lm | 280° | 600mm | Type A | 0.9 |
| LED F10T8/213/G/600/AG | 10W | 220-240V | Agricultural (Purple) | 1300K | ≥20 | 300lm | 280° | 600mm | Type A | 0.9 |
| LED F10T8/210/G/600/AQ | 10W | 220-240V | Aquarium (Blue + White) | 16000K-20000K | ≥20 | 330lm | 280° | 600mm | Type A | 0.9 |
| LED F20T8/827/G/1200/YE | 20W | 220-240V | Yellow Enhancement | 2700K | ≥80 | 1800lm | 280° | 1200mm | Type A | 0.9 |
| LED F20T8/836/G/1200/RE | 20W | 220-240V | Red Enhancement | 3600K | ≥80 | 2000lm | 280° | 1200mm | Type A | 0.9 |
| LED F20T8/880/G/1200/WE | 20W | 220-240V | White Enhancement | 8000K | ≥80 | 2200lm | 280° | 1200mm | Type A | 0.9 |
| LED F20T8/627/G/1200/YL | 20W | 220-240V | Yellow | 2740K | ≥60 | 2400lm | 280° | 1200mm | Type A | 0.9 |
| LED F20T8/213/G/1200/AG | 20W | 220-240V | Agricultural (Purple) | 1300K | ≥20 | 600lm | 280° | 1200mm | Type A | 0.9 |
| LED F20T8/210/G/1200/AQ | 20W | 220-240V | Aquarium (Blue + White) | 16000K-20000K | ≥20 | 750lm | 280° | 1200mm | Type A | 0.9 |

Features

Food Display Tube

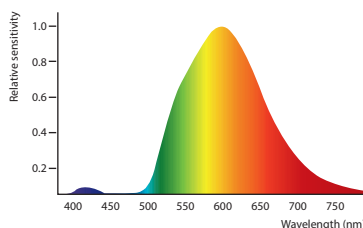
- Enhance the appearance of fresh food and prevent discolouration

- Yellow Enhancement
- Red Enhancement
- White Enhancement



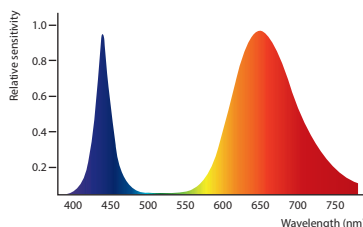
Yellow Tube

- Special lighting for lithographic and printing industry. Protect products from exposure to blue and UV light



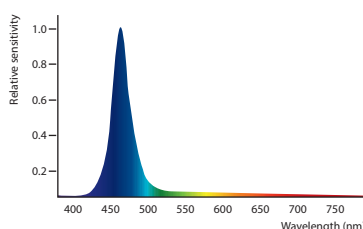
Agricultural Tube

- Emitted optimal light color speeds up the photosynthetic processes and the growth of agricultural products



Aquarium Tube

- Emitted light in blue and red color spectrum has positive influence on the growth of the corals and marine creatures



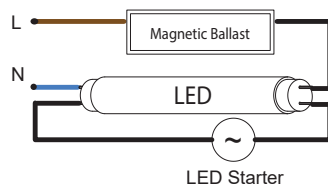


Features

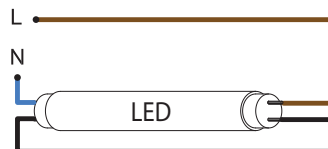
- Energy saving with low power consumption
- Perfect retrofit traditional lamps for magnetic ballast circuit
- No rewiring cost for magnetic ballast circuit
- No mercury and hazardous substances

Wiring

For direct retrofit in CCG circuit, replace LED tube and LED starter

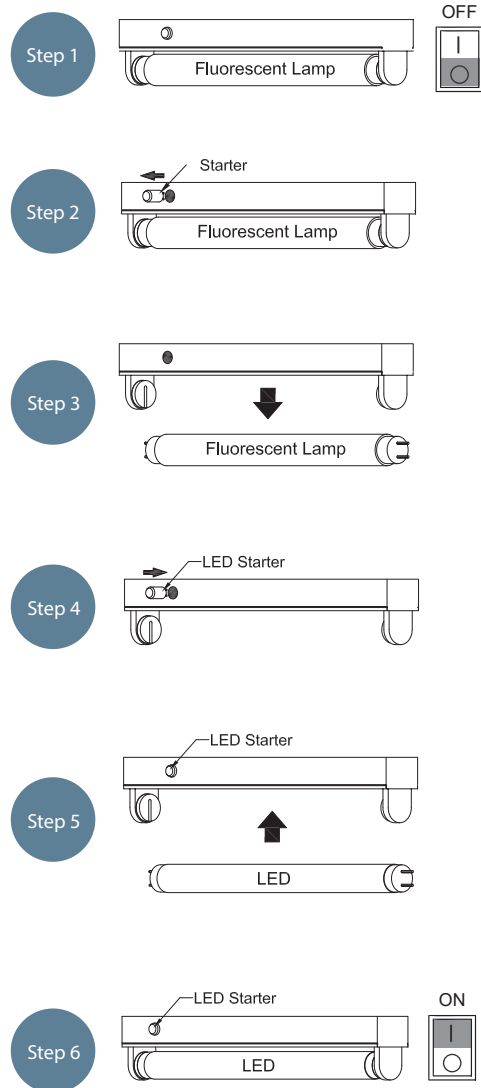


For direct connection with AC



Installation Guide

For direct retrofit in CCG circuit, replace LED tube and LED starter



For direct connection with AC

