

Sport Lighting Solution LED A MAXI



LED A MAXI high-efficiency floodlight series designed exclusively for sports and multifunctional lighting applications. It can perfectly replace traditional 1000W and 2000W metal halide lamp while reducing energy consumption.

LED A MAXI is composed of die-cast aluminium. 11 types of beam angles for different applications, offer uniform light distribution and eliminate light spill. High transparency tempered glass enables the luminaire to reach 110-130lm/W with high color rendition – CRI 80/90.

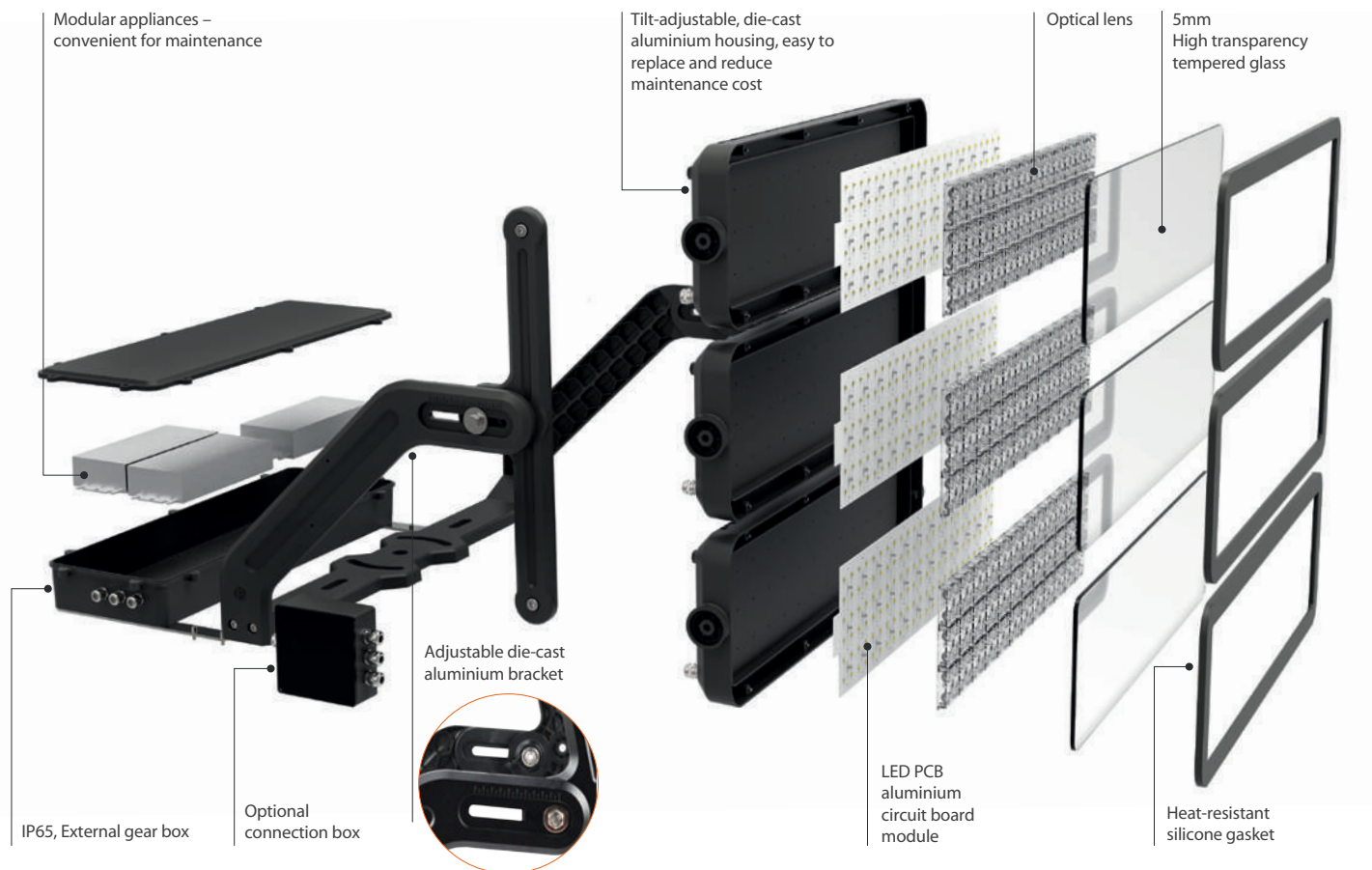
The floodlight range includes three versions (A MAXI 3M, A MAXI 2M, and A MAXI 1M). The entire luminaire and each module are tilt-adjustable to facilitate aiming. External gear box with build-in high-power and non-flickering driver can be integrated to or separated from the luminaire according to different applications.

The separable design is convenient and easy for installation. The streamline design minimizing the windage is ideal for outdoor lighting. Lightweight and airtight housing design enable the luminaire to withstand against weathering and corrosion.

11 types of optical solutions are able to satisfy different applications. LED A MAXI is dimmable with different options, such as 0-10V and DALI etc.

The precise light beam supports HDTV recording, flicker-free recording and slow motion recoding that conform to the professional sports broadcasting standards.

Product Structure



Module

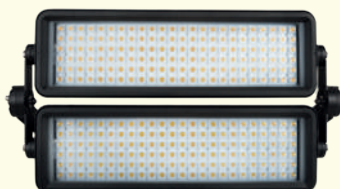
Front View

Back View

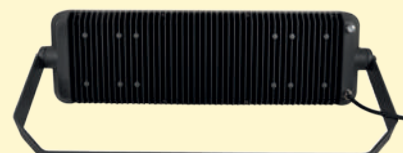
A MAXI 3M (700-1200W)
composed of 3 modules,
designed exclusively for sports,
public areas, ports, and airport
aprons lightings.



A MAXI 2M (400-600W)
composed of 2 modules,
designed exclusively for sports,
road, public areas, and building
lightings.

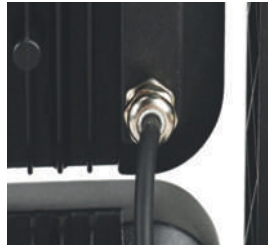


A MAXI 1M (100-300W)
composed of 1 module,
designed exclusively for
stadium bleachers, roads,
public areas, and building
lightings.





Adjustable bracket



M16 waterproof lock



Tilt-adjustable module



Safety steel wire rope



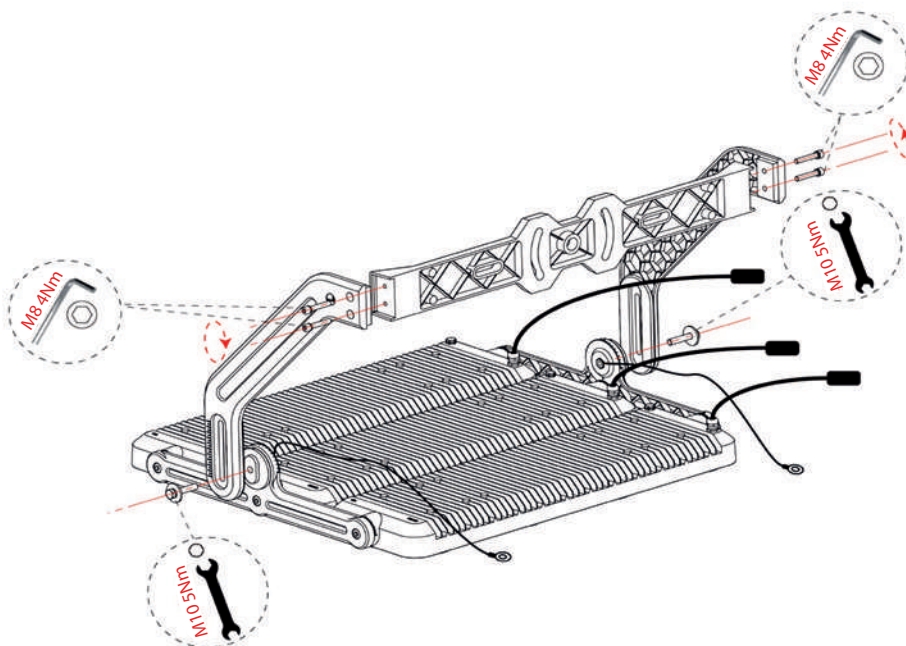
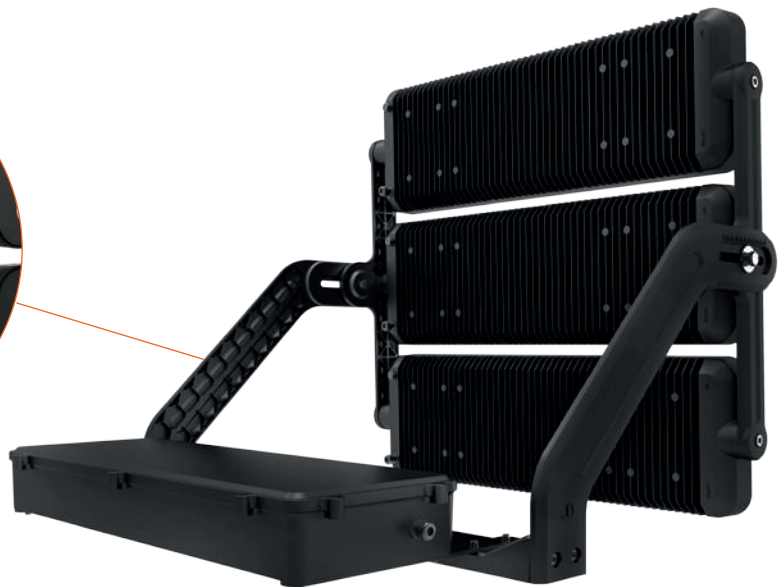
External gear box



Die-cast aluminium bracket



Optional connection box



Installation Instructions

In order to avoid electric shock during construction, turn off the power before installation and require professional electricians to read and follow the safety instructions before installing and repairing.

When closing the luminaire, ensure that all electrical wires are not squeezed in the luminaire slot to avoid short circuit.

The local construction instructions should be followed when installing and repairing.

Ensure that the luminaire is not damaged before installation.

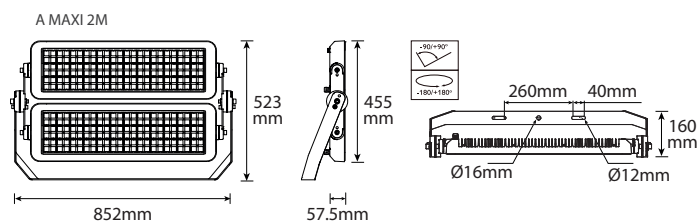
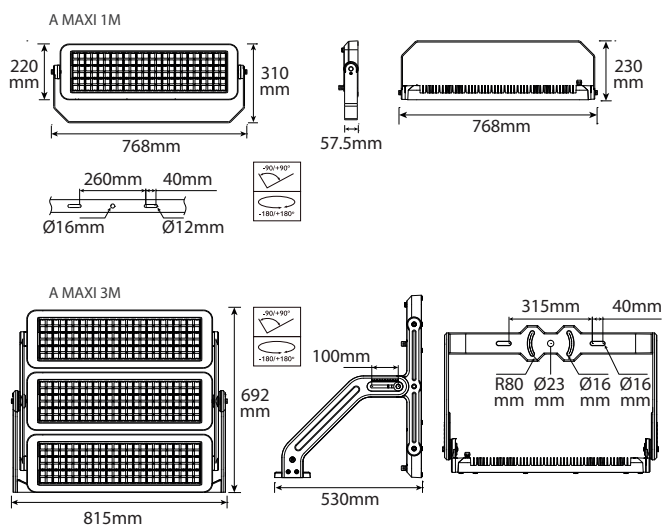
Specifications



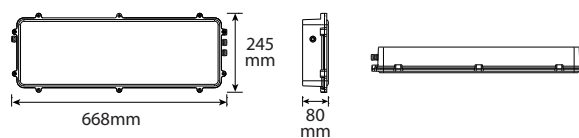
Model	A MAXI 1M (100-300w) A MAXI 2M (400-600w) A MAXI 3M (700-1200w)
Light source	LED
Power	200W / 300W / 500W / 600W / 700W / 800W / 1000W / 1200W
Luminaire flux	11000 - 33000lm (A MAXI 1M) 44000 - 66000lm (A MAXI 2M) 77000 - 140000lm (A MAXI 3M)
Luminaire efficacy	110-130lm/W
CCT	5000K (3000K / 4000K / 5700K)
CRI	> 80 (70 / 90 are available)
Lifetime	50000 Hours (Working temperature 25°C)
Operating temperature range	-30-45°C

Dimming	DALI / 0-10V / PWM / NBIOT
Electrical	Class I Input Voltage: 90-305V/50-60Hz, 170-305V/50-60Hz
Tightness level	IP65
Materials	ADC12 Die-cast aluminium housing High transparency tempered glass 304 stainless steel screw
Impact resistance	IK08
Weight	A MAXI 1M 18kg A MAXI 2M 29kg A MAXI 3M 35kg A MAXI 3M 28kg (Excluding drivers)
Color	Grey (Black / White are available)

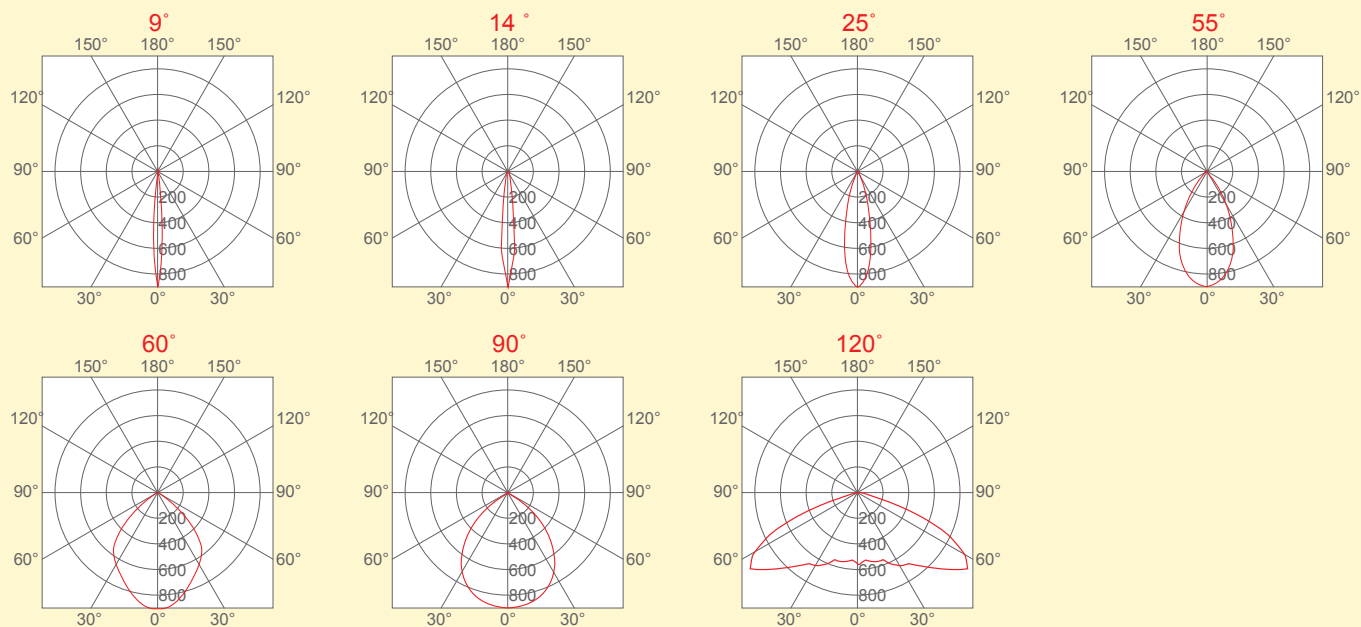
Dimensions



External gear box



Optics - Symmetric



Optics - Asymmetric

